

FEATURES & SPECIFICATIONS

INTENDED USE

Provides an LED lighting platform to deliver general or task lighting for residential and light commercial applications. Light engine delivers long life and excellent color to ensure a quality, low-maintenance light installation. Ideal for use in bathrooms, lavatories, hallways, corridors, stairways, utility areas and more.

CONSTRUCTION

The Traditional Square Vanity is constructed of an acrylic diffuser with housings available in brushed nickel and bronze finishes. The white acrylic diffuser provides even illumination and softens the appearance of the LEDs for improved aesthetics.

OPTICS

2' produces 1300 lumens, 3' produces 1900 lumens, and 4' produces 2500 lumens at 3000K with 50,000 hours of life.

Extruded acrylic diffuser is of highly transmissive material to minimize LED image and provides high-angle brightness control.

ELECTRICAL

Long-life LEDs, coupled with a multivolt driver, provide extended service life. Standard input = 9.5 watts, (1'); 18 watts, (2'); 26 watts, (3'); 34 watts, (4'). Fixture is rated to deliver L70 performance at 50,000 hours and operates at 120-277 volts.

Use with non-dimmable switches only.

LISTINGS

UL Listed to US and Canadian safety standards. Listed for damp locations. ENERGY STAR® certified.

WARRANTY

5-year limited warranty. Complete warranty terms located at

www.acuitybrands.com/CustomerResources/Terms_and_conditions.aspx

NOTE: Actual performance may differ as a result of end-user environment and application.

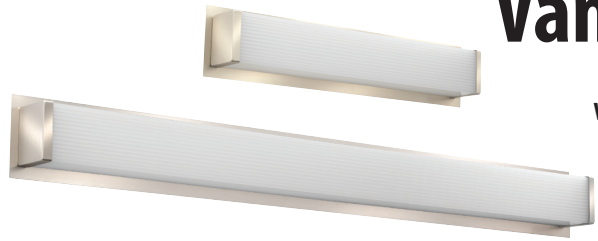
All values are design or typical values, measured under laboratory conditions at 25 °C.

Specifications subject to change without notice.

Catalog Number
Notes
Type

Decorative Indoor

Traditional Square Vanity



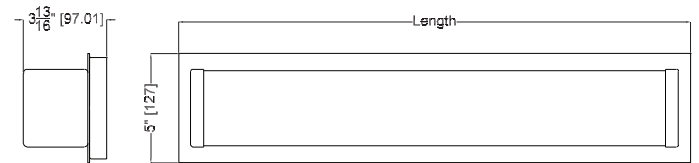
VANITY LED



ADA
U.S. PATENT PENDING

SPECIFICATIONS	2FT	3FT	4FT
Length:	23-7/16 (595)	35-1/4 (895)	47-1/16 (1195)
Weight:	7.3 (3.3)	10 (4.5)	12.7 (5.8)
3000K Lumens (LPW)	1302 (72)	1919 (73)	2551 (75)
4000K Lumens (LPW)	1373 (76)	2024 (77)	2689 (79)

All dimensions are inches (millimeters) unless otherwise indicated. Weights are pounds (kilograms).



ORDERING INFORMATION

For shortest lead times, configure product using **bolded options**.

Example: FMVTSL 36IN MVOLT 30K 90CRI BN

Series	Length	Voltage	Color temperature	CRI	Finish
FMVTSL Traditional Square Vanity	24IN 2' Nominal	MVOLT MVOLT (120V-277V)	40K 4000 K ¹	90CRI >90	BN Brushed Nickel
	36IN 3' Nominal		35K 3500 K ²		KR Chrome ³
	48IN 4' Nominal		30K 3000 K		BZ Bronze ³
			27K 2700 K ²		

Replacement parts: Order as separate catalog number.	
DFMVTSL 24IN	2' Traditional Square replacement diffuser
DFMVTSL 36IN	3' Traditional Square replacement diffuser
DFMVTSL 48IN	4' Traditional Square replacement diffuser

Notes

- 60-day lead time for non-stock color temperatures; minimum 50 order quantity.
- 90-day lead time for non-standard color temperatures; minimum 50 order quantity.
- 60-day lead time for non-stock finishes; minimum 50 order quantity.

LED Vanity Traditional Square

PHOTOMETRICS

Distribution Curve

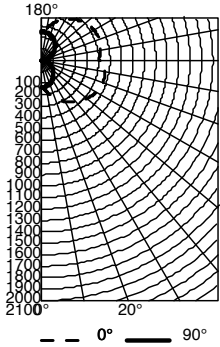
Distribution Data

Output Data

Coefficient of Utilization

Illuminance Data at 30" Above Floor for a Single Luminaire

FMVTSL 48IN, 3000K LEDs, input watts: 33.3, delivered lumens: 2,671, LM/W=80, test no. LTL29644M, tested in accordance with IESNA LM 79-80.



CP Summary

	0°	90°
0°	234	234
5°	253	233
15°	315	224
25°	385	206
35°	447	182
45°	498	152
55°	538	118
65°	564	80
75°	570	40
85°	555	6
90°	505	9

Coefficients of Utilization

RcR	pw	Coefficients of Utilization								
		20%			30%			50%		
		70%	50%	30%	50%	30%	10%	50%	30%	10%
0	107	107	107	99	99	99	83	83	83	
1	94	89	84	81	77	73	68	64	61	
2	85	76	68	69	63	57	58	53	48	
3	76	65	57	60	53	46	50	44	39	
4	70	57	48	53	45	38	44	37	33	
5	63	51	42	46	38	32	39	32	27	
6	58	45	36	41	33	28	35	28	24	
7	54	40	32	37	29	24	31	25	20	
8	50	37	28	34	26	21	28	22	18	
9	46	33	25	31	23	18	26	20	16	
10	43	30	23	28	21	16	24	18	14	

Zonal Lumen Summary

Zone	Lumens	% Lamp	% Fixture
0° - 30°	205	7.7	7.7
0° - 40°	358	13.4	13.4
0° - 60°	743	27.8	27.8
0° - 90°	1312	49.1	49.1
90° - 120°	580	21.7	21.7
90° - 130°	787	29.5	29.5
90° - 150°	1141	42.7	42.7
90° - 180°	1358	50.9	50.9
0° - 180°	2671	100.0	100.0

LIGHTING FACTS

Lithonia Lighting

LED lighting facts®
A Program of the U.S. DOE

Light Output (Lumens) **1363**

Watts **17.68**

Lumens per Watt (Efficacy) **77.09**

Color Accuracy **93**

Color Rendering Index (CRI)

Light Color **3000 (Bright White)**

Correlated Color Temperature (CCT)

2700K 3000K 4500K 6500K

Warm White Bright White Daylight

All results are according to IESNA LM-79-2008: Approved Method for the Electrical and Photometric Testing of Solid-State Lighting. The U.S. Department of Energy (DOE) verifies product test data and results.

Visit www.lightingfacts.com for the Label Reference Guide.

Registration Number: NJSM-SQH3A (2/11/2016)
Model Number: FMVTSL 24IN 30K 90CRI
Type: Luminaire - Industrial

Lithonia Lighting

LED lighting facts®
A Program of the U.S. DOE

Light Output (Lumens) **2009**

Watts **25.27**

Lumens per Watt (Efficacy) **79.5**

Color Accuracy **93**

Color Rendering Index (CRI)

Light Color **3000 (Bright White)**

Correlated Color Temperature (CCT)

2700K 3000K 4500K 6500K

Warm White Bright White Daylight

All results are according to IESNA LM-79-2008: Approved Method for the Electrical and Photometric Testing of Solid-State Lighting. The U.S. Department of Energy (DOE) verifies product test data and results.

Visit www.lightingfacts.com for the Label Reference Guide.

Registration Number: NJSM-DUL4FZ (2/11/2016)
Model Number: FMVTSL 36IN 30K 90CRI
Type: Luminaire - Industrial

Lithonia Lighting

LED lighting facts®
A Program of the U.S. DOE

Light Output (Lumens) **2613**

Watts **33.3**

Lumens per Watt (Efficacy) **78.47**

Color Accuracy **93**

Color Rendering Index (CRI)

Light Color **3000 (Bright White)**

Correlated Color Temperature (CCT)

2700K 3000K 4500K 6500K

Warm White Bright White Daylight

All results are according to IESNA LM-79-2008: Approved Method for the Electrical and Photometric Testing of Solid-State Lighting. The U.S. Department of Energy (DOE) verifies product test data and results.

Visit www.lightingfacts.com for the Label Reference Guide.

Registration Number: NJSM-3BXJF8 (2/11/2016)
Model Number: FMVTSL 48IN 30K 90CRI
Type: Luminaire - Industrial